



International  
Society for  
**Applied  
Ethology**

# Newsletter

Issue 56 • 2020 July



## Contents

<b>President’s Piece .....</b>	<b>2</b>
<b>Updates from Your ISAE Council .....</b>	<b>3</b>
Council and Ethics Committee Position Vacancies.....	3
Membership .....	4
Communications .....	4
Editors .....	5
Students.....	6
Awards.....	7
Finances .....	8
<b>ISAE Congress News .....</b>	<b>9</b>
Congress Updates .....	9
2020 Global Virtual Meeting.....	10
2020 Virtual Annual General Meeting.....	11
<b>ISAE Regional News and Development .....</b>	<b>11</b>
Development .....	11
Regional Updates .....	12
<b>Other News .....</b>	<b>15</b>
ISAE Takes a Stand Against Racism and Supports Diversity and Inclusiveness .....	15
Remembering Roger Ewbank.....	16
Survey Request .....	17
EU Platform on Animal Welfare .....	17
Collaboration with OIE .....	19
New Books.....	20
<b>Contact Information .....</b>	<b>22</b>
Council Members .....	22
Regional Secretaries and Student Representatives .....	23

## President's Piece

Dear ISAE members,

Since the last newsletter we all experienced dramatic changes to our lives that were inconceivable just a few months ago. Depending on where we live and how the family situation is, the level of restriction and effects on our well-being might have differed substantially, but probably all of us felt concern for other people. Thus, I strongly hope you and your loved ones were untroubled from the coronavirus and you could handle the challenges of home office, online-teaching and endless online-meetings in a positive mood. The pandemic brought to light the strong link between animal and human welfare, and, in principle, the need for more sustainable ways of living together. Let us hope and work toward the crisis not hindering, but even furthering, such developments.

Just before the dramatic development of the pandemic we received good news: Our proposal for continuation of the [Developing Countries Congress Attendance Fund \(DCCAF\)](#) was accepted by the Open Philanthropy Project. This will help us to continue [ISAE Development](#) activities to support the global development of animal welfare science focusing on countries where applied ethology is not yet widely established. For the next two ISAE Congresses (in India 2021 and in the Republic of North Macedonia in 2022) the DCCAF will provide full funding for people of those countries to participate in the congress and enable the organisation of additional workshops and farm visits. Further, we can support regional activities in Africa, Asia, Latin America and in the Balkan region to maintain the momentum of ISAE development in these regions.

At the time of this news it became evident that we will not be able to hold our annual Congress as planned and we decided to postpone the 54th ISAE Congress in Bangalore, India, to 2021. However, young Council members developed the idea of ISAE going virtual and prepared the [ISAE Global Virtual Meeting](#). The virtual meeting will take place on the same dates as the original congress: the **6th and 7th of August**. It will be a 2x12 h event covering all time zones of the world – but with a break in between – so theoretically all interested people around the world can participate in the whole meeting (images pop up in my mind of colleagues sitting comfortably in the bed having a full coffee pot close by and trying to stay awake). The [ISAE Special Issue](#) in *Applied Animal Behaviour Science* normally linked to the annual Congress is also shaped by the pandemic and deals with it from an applied ethology point of view. Please read on for details on the call for [COVID-19: Rethinking Confinement](#).

We will also go virtual for our [Annual General Meeting](#) to have the possibility of engaging with ISAE members worldwide during these difficult times of social distancing. We will stick close to the original date planned and link it to the Global Virtual Meeting. Three [officer positions will be vacant](#), [Communications Officer](#), [Assistant Communications Officer](#), and [Development Officer](#), and these will be voted on by means of an online tool. Please read further for details about these positions and how to apply, should you be interested in serving on Council.

Just recently, in June, the [EU Platform on Animal Welfare](#), in which ISAE is a member, met virtually. In this seventh meeting, being the first under the new EU Commission, the future plans for activities in the animal welfare area within the Farm to Fork Strategy were presented. They seem promising, including the revision of EU animal welfare legislation and exploring options for animal welfare labelling of food. You can give your feedback on the roadmap of the “fitness

check,” maybe before leaving for holidays as the deadline is **29th July**; links and more details on the platform including subgroup activities are below.

Another theme of global relevance needed attention by ISAE – the fight against racism that started in the US and that brought the widespread problem of discrimination into focus. The ISAE has adopted a [diversity statement](#) some years ago and through the development activities we try to include new countries and members, but nevertheless diversity is still relatively limited in some respects. You all have received the ISAE [statement against racism](#) via email recently. Please contact Bas Rodenburg ([t.b.rodenburg@uu.nl](mailto:t.b.rodenburg@uu.nl)) should you have ideas to promote diversity and support inclusiveness in our Society.

Hope to see you soon, online, at the AGM and/or the ISAE Global virtual meeting.

Best wishes, stay safe!

*Susanne Waiblinger / President of the ISAE (2019-2021)*

## Updates from Your ISAE Council

### Council and Ethics Committee Position Vacancies

Dear ISAE Members,

This year, three ISAE Council Positions are open: Communications Officer, Assistant Communications Officer, and Development Officer. In addition, the ISAE is seeking two Ethics Committee members. It is an exciting time to be a part of such an amazing organization and we look forward to receiving your application!

1. **Communications Officer.** The Communications Officer’s duties include maintaining the fantastic ISAE website and distributing ISAE-related information to ISAE members via email, among other duties. The Communications Officer typically serves a 4-year term (**2020-2024**).
2. **Assistant Communications Officer.** The Assistant Communications Officer handles the ISAE social media accounts (Twitter and Facebook) and supports the Communications Officer with strategic communications planning. This role became a voting Council position in 2019. For this year only, we are in need of someone to serve a 2-year term (**2020-2022**). In the future, this role will typically be for a 4-year term (i.e., 2022-2026).
3. **Development Officer.** The Development Officer promotes ISAE activities in countries where the ISAE is underrepresented or not represented. The Development Officer usually serves a 4-year term (**2020-2024**).
4. **Ethics Committee Members.** The Ethics Committee is seeking two members this year. The Ethics Committee’s duties include reviewing the ISAE Ethical Guidelines and advising the Local Congress Organising Committee about the reviews of Congress abstracts, among other duties.

If you are interested in serving on the ISAE Council or the Ethics Committee, which is not a Council position, please submit your application materials to me (Marisa, [merasmus@purdue.edu](mailto:merasmus@purdue.edu)),

including 1) a paragraph outlining your interest in the position and relevant skills, and 2) your 2-page CV no later than **Friday, 24 July**.

*Marisa Erasmus / Secretary of the ISAE (2017-2021)*

## Membership

Most of you might have noticed, I took over the interim Membership Secretary position in February 2020 from the previous interim Membership Secretary, Courtney Daigle, who unfortunately had to step down due to colliding schedules. It has been a lovely time for me in this position and I much enjoy interacting with all of you. But rest assured, Gemma Charlton will be back from maternity leave in October 2020 and will then take this position over again. Although we did our best to transition smoothly, we want to apologise to any members who experienced any delays in processing their membership queries.

The 2020-21 membership renewal period has now come to a close. A big thank you to everyone who has renewed their membership. Of the 707 current members, 505 have already paid for this year. Payments are still coming in, so we are likely to see the number of renewals increase over the next few weeks.

Please renew your membership if you haven't yet, and if you are having trouble please get in touch ([isaemembership@hotmail.co.uk](mailto:isaemembership@hotmail.co.uk))!

All the best –

*Christian Nawroth / Interim Membership Secretary of the ISAE (2020)*

## Communications

It is with wistfulness that we, Jennifer & Christy, bid you adieu as your out-going Communications Officer and Assistant Communications Officer in our final ISAE Newsletter in these roles.

Jennifer was elected at the 2016 AGM in Edinburgh. With rapid growth in ISAE communications activity, especially on our new social media platforms, the Council co-opted the new role of Assistant Communications Officer in 2017. We were grateful Christy agreed to take on the task, at the recommendation of the late Fiona Lang (then Assistant Secretary). In 2019, The Assistant Communications Officer role was officially made a voting Council position, with a 4-year term offset by 2 years from that of the Communications Officer.

**Seeking New Assistant Communications Officer.** With Christy already having served in this role for 3 years, it is with regret she has made the difficult decision to step down. We are now [seeking](#) someone for the Assistant Communications Officer position for the next 2 years (2020-2022). The role will be due for election again in 2022 and will resume a 4-year cycle.

**ISAE Communications Retrospective, 2016-2020.** We have been thrilled to be part of all the changes and growth in ISAE communications over the last 4 years, and we take this time to briefly reflect. For more detail, see the respective Newsletter issues linked in brackets.

- **2016 [49]:** [Website overhaul](#) project initiated, to include format responsive to devices (computer, phone, tablet), improved membership directory, member-submitted animal

photos, and creation of new logo through multiple member-feedback opportunities. ISAE [social media accounts](#) created on [Facebook](#), [Twitter](#), and LinkedIn.

- **2017** [[50](#), [51](#)]: [Assistant Communications Officer](#) position co-opted to manage social media and assist in devising communications strategy. New [ISAE logo](#) debuts. Over 300 gorgeous [animal photos](#) submitted by ISAE members. [Revamped website](#) debuts during the Aarhus Congress. [ISAE promotional materials](#) redesigned with new ISAE brand styling. New non-hotmail [email address](#) created.
- **2018** [[52](#), [53](#)]: Began automatic sharing of temporary free-access sharelinks to [ISAE members' papers](#) in *Applied Animal Behaviour Science* on ISAE website and social media. [Communications Strategy](#) sub-committee begins evaluating ISAE's communications goals and activities, led by Christy.
- **2019** [[54](#), [55](#)]: [Assistant Communications Officer](#) became a voting Council position. [Communications strategy](#) finalized to inform prioritization of activities to serve the ISAE mission; as part of this realignment, LinkedIn account no longer active.
- **2020** [[56](#) – this issue]: [Congress communications](#) guide created, with the help of [Margit Bak Jensen](#), to streamline communications planning for future Congress organizing committees. Alternative interactive opportunities spearheaded by ISAE members, particularly the [Animal Welfare Slack Workspace](#), [Applying Ethology webinars](#), and the upcoming [Global Virtual Meeting](#).

**Share Your News!** If you have job or graduate student positions to advertise, (virtual) conferences or courses, news items, survey requests, or open-access papers or temporary free-access author links, send the details to [info@applied-ethology.org](mailto:info@applied-ethology.org). If you have **Twitter**, include your handle so we can tag you!

Jennifer and Christy will continue in our roles this Fall to ease the transition to our successors. It has been a pleasure serving the ISAE, and we look forward to continuing to interact with you online – and someday in person again – in the future.

[Jennifer Van Os](#) / *Communications Officer of the ISAE (2016-2020)*  
[Christy Goldhawk](#) / *Assistant Communications Officer of the ISAE (2017-2020)*

## Editors

**Special Issues.** The Special Issue of *Applied Animal Behaviour Science*, based on the 2019 Congress in Bergen, Norway, titled [Animal Lives Worth Living](#) is almost ready, including 10 papers. Seven of the earlier 19 confirmed contributors had to decline, potentially also due to the editors maintaining a slightly stricter deadline for submissions.

As this summer's Congress in Bangalore has been postponed, this year's Special Issue will be open to *all* ISAE members for submitting their work. The Special Issue is themed [COVID-19: Rethinking Confinement](#). The Issue considers all aspects related to animals and the COVID-19 pandemic, as well as studies addressing confinement and the impact of the social and physical environment on animals in general. Submissions are welcome from June to November 2020. Please **submit your articles** by selecting the option [ISAE2020](#) as the article type. More details can be found at the website of *Applied Animal Behaviour Science*:

<https://www.journals.elsevier.com/applied-animal-behaviour-science/call-for-papers/covid-19-rethinking-confinement-isae-2020>

With Elsevier, we arranged an extra benefit to publishing in the ISAE Special Issues. Articles from the ISAE Special Issue will be freely accessible online up to one year after publication.

Moreover, all ISAE Special Issues from 2015 onward have been made freely accessible online and have now better visibility:

<https://www.journals.elsevier.com/applied-animal-behaviour-science/article-selections/isae-special-issues>

In case you receive a request to review a manuscript, please consider the request and provide a timely response (even if it is a response to decline). Thank you.

**Help-with-English Scheme.** The ISAE has an English grammar and language editing service available to help members prepare manuscripts for publication in *Applied Animal Behaviour Science*. In the last half year we received 9 manuscripts for correction and great support of volunteers who made the corrections. The free editing service is a real benefit of ISAE membership, so please feel free to make use of this opportunity.

ISAE members should send requests for manuscript editing assistance to the ISAE Junior Editor, **Dr. Dana Campbell**, at [Dana.Campbell@csiro.au](mailto:Dana.Campbell@csiro.au). Please include the manuscript title, contact information, key words, and a copy of the abstract. Your manuscript will be edited by a (native English) ISAE member who has volunteered to help you with the English of your paper. It may take up to 3 weeks before you receive the revisions as it is based on volunteers. The volunteer should be acknowledged in your paper but will not expect to be included as an author. If you are an ISAE member interested in serving as a volunteer for this program, please contact Dana for more information.

**Irene Camerlink / Senior Editor of the ISAE (2019-2021)**  
**Dana Campbell / Junior Editor of the ISAE (2019-2021)**

## Students

**Welcome to our new Student Representative.** Welcome to **Rachel Park**, who was elected as an ISAE Student Representative in January 2020! Rachel is a PhD student at North Carolina State University in the College of Veterinary Medicine in the USA where she studies pain and the perception of pain across dog breeds.

**2020 International Congress Events.** Due to COVID-19, the 2020 ISAE Congress in Bangalore, India has been postponed to 2021. We look forward to seeing everyone in 2021, when it is safe to travel.

**Student Webinars.** In 2019 ISAE saw an opportunity to bolster a community of scientists who are keen to learn together throughout the year. We recognized that traveling to conferences can be cost-prohibitive; thus, technology can be used to create a more inclusive organization. The Student Representatives (**Laura Whalin** and **Allison Pullin**), with the help of **Jennifer Van Os**

(Communications Officer), [Christy Goldhawk](#) (Assistant Communications Officer), and [Rebecca Sommerville](#) (Development Officer) offered an opportunity for student webinars. Unfortunately, no one submitted an abstract.

However, in January the Student Representatives ([Laura Whalin](#) & [Rachel Park](#)) began collaborating with [Christian Nawroth](#). Christian had developed [Animal Welfare Slack Workspace](#) and was interested in adding a webinar component. On March 30, with the help of [Jen-Yun Chou](#), we launched our first [Applying Ethology](#) webinar. The need for webinars as a place for idea exchange has been exacerbated given COVID-19, and may also be a space for people to present and learn about research if they cannot travel to conferences.



[Applying Ethology](#) webinars now take place twice per month. If you are interested in attending webinars related to animal behaviour and welfare, or if you are interested in job postings, recent papers, and methodology questions please consider joining the [Animal Welfare Slack Workspace](#). The slack space is open to everyone, regardless of ISAE affiliation. Please email [Rachel Park](#) ([rmpark@ncsu.edu](mailto:rmpark@ncsu.edu)) or [Laura Whalin](#) ([laura.whalin@alumni.ubc.ca](mailto:laura.whalin@alumni.ubc.ca)) to gain admittance. For those of you who have already joined, thank you! We now have 618 members and have had 8 webinars.

Once you join the [Animal Welfare Slack Workspace](#), please join [#webinar](#). A calendar with scheduled talks, links to future presentations, recordings of past webinars, and speaker biographies are included. If you would like to give a presentation, please email [Laura Whalin](#) or [Rachel Park](#). All students and early career scientists are welcome to present an [Applying Ethology](#) webinar! In the future we hope to offer ISAE-sponsored webinars, but for now these talks are open to all students and scientists interested in animal behaviour and welfare.

**Student Resources.** Consider checking out the [Educational Resources](#) section on the ISAE Website! There is information about graduate study, time management, teaching, and more.

*[Laura Whalin](#) / Student Representative of the ISAE (2019-2021)*  
*[Rachel Park](#) / Student Representative of the ISAE (2020-2022)*

## Awards

**ISAE Awards Postponed.** Due to the cancelation of this year's ISAE International Congress in India, it was decided to have no call for ISAE Awards this year but wait for next year to have a forum to present the awardees at the 2021 ISAE International Congress. We hope that all of you understand this decision and we look forward to receiving your nominations next year.

## Changes to ISAE Awards.

*Creativity Award.* Changes have been made to the wording of the eligibility section of the [ISAE Creativity Award Criteria](#) to provide more clarity. Below is the change made (in *orange*) to the eligibility section:



The candidate must be an individual and a paid-up ISAE member. There are no limits to age (upper or lower) or publication record. Self-nomination is possible; nomination from someone else (preferred) requires approval from the candidate. *The nomination must include a description of how the nominee has shown her/his creativity through her/his work and the impact of this to the applied ethology field.* Several nominations may be entered for the same candidate, and unsuccessful candidates may apply again.

*New Investigator Award.* The New Investigator Award is usually open to candidates who have completed their PhD studies less than 5 years ago. The ISAE Council has recommended that for 2021, the ISAE New Investigator Award will receive nominations from candidates who have completed their PhD studies less than 6 years ago; this to accommodate that no nominations were accepted this year. This change will be only for the ISAE International New Investigator Award call in 2021 due to the unforeseen circumstances presented this year.

**Giuliana Miguel / Assistant Secretary of the ISAE (2019-2023)**

## Finances

**Treasurer's Mid-Year Report.** The report contains the mid-year, 6-month summary for the period **January 1<sup>st</sup> to May 31<sup>st</sup>, 2020.**

The accounts are healthy. However, it should be noted that the revenue marked "Other" refers to the David Wood-Gush memorial fund which has now been transferred from The University of Edinburgh's account into the ISAE savings account, and Payment Returns is a result of bounce-back from transfer failures of funds to local organisers for ISAE2020 Bangalore. Thus, the largest actual income continues to be from membership subscriptions. The largest outgoing expense so far this year was to Intergage (for membership and website services). We have also successfully transferred funds to local organisers for ISAE2020 Bangalore (now held for 2021). High bank charges reflect multiple international payments for this conference. We have now managed to open a Euro account to help reduce costs due to fluctuating exchange rates and help offer some stability in case of Brexit fallout.

Our accounts for 2019 are being prepared for independent examination ahead of our submission to the Office of the Scottish Charity Regulator.

### ISAE Accounts for period Jan 1 to May 31 2020

#### *Statement of Revenue and Expenses (in GBP, £)*

##### Revenue:

AAALAC returns	0
Congress Profit	0
Ethology Book sponsorship	0
Membership subs	3,951.00
Net Interest	22.66
Payment returns	6,815.24
Returns from regions	0
Scholarship funds from sponsors	0
Other	8,742.96

Transfers in	11,742.96
<b>Total Revenue</b>	<b>31,274.82</b>

**Expenses:**

AAALAC	0
Bank Charges	573.71
Conference Attendance Award	0
Conference Attendance Fund	0
Council Member Costs	0
Elsevier AABS	0
Ethology book paid	0
Membership services - Intergage	1,032.00
Regional Payments	8,750.00
SAGEPay	129.60
Scholarship funds awarded	0
Subs returns	0
Transfers out	11,742.96
Wageningen Press	0
<b>Total Expenses</b>	<b>22,228.27</b>

Excess of Revenue over expenses	<b>9,046.55</b>
Beg Fund Balances	<b>37,778.31</b>
End Fund Balances	<b>46,824.86</b>

*Emma Baxter / Treasurer of the ISAE (2017-2021)*

## ISAE Congress News

### Congress Updates

As you are probably well aware by now, our international ISAE Congress in **Bangalore, India** has been postponed until **August 2021**. The website has been updated (<http://www.isae2021.com/>) and abstract submission and registration will be re-opened in December 2020. As indicated previously, authors can either maintain their original submission, submit a revised abstract, or submit a completely new abstract. We all hope that the situation regarding COVID-19 will have improved by next August so that we can meet each other in person in India! ISAE has also received funding again from the Open Philanthropy Project to continue our development program. For the congress in India, we will again run the ISAE Developing Countries Congress Attendance Fund (DCCAF), with a focus on supporting delegates from Asia to attend the Congress and associated training program.

The Congress in **North Macedonia** has also been postponed by one year, until **September 2022**. I would like to thank both organizers again for their flexibility in this matter.

**2021, 2022, but what about 2020?** A group of enthusiastic ISAE members, led by our Assistant Development Officer **Jen-Yun Chou**, has taken the brilliant initiative to host an electronic ISAE webinar meeting. In this meeting, ISAE members from different regions of the world will present their work in a timeslot that fits their daytime schedule. In this manner, we hope to host a 24-hour online ISAE meeting, where six regions of the world all host a 4-hour session of presentations. An excellent initiative and an opportunity for our members to still present and discuss their work this year!

**And what about 2023 and further?** For these years, ISAE is still open for bids. For 2023, ISAE received one excellent bid that Council is currently considering. Once that bid is accepted I will be able to tell you more about this exciting destination! Do you see yourself hosting ISAE 2024 (ideally outside of Europe, perhaps somewhere in the Latin America region)? Please get in touch with me to discuss!

- 2020: ISAE Global Virtual Meeting
- 2021: ISAE International Congress in Bangalore, India
- 2022: ISAE International Congress in Republic of North Macedonia
- 2023: ???
- 2024: ??? This could be in *your* country!

**T. Bas Rodenburg** / *Senior Vice-President of the ISAE (2019-2021)*

## 2020 Global Virtual Meeting

**ISAE is going virtual!** Due to the outbreak of COVID-19, the ISAE congress in Bangalore India was postponed to August 2021. In the meantime, we would still like to provide an opportunity, especially for students and early career scientists, to present their work. We therefore announce a virtual meeting on **6-7 August, 2020**. This meeting will feature different ISAE regions from six continents to showcase the diversity within our society, running as a 2x12h online webinar marathon!

As a scientific society, ISAE recognises the importance of supporting and promoting diversity in its membership and the wider community in gender, age, ethnicity, geographical representation, and other factors. Therefore, we always welcome and encourage people from all backgrounds to submit an abstract for a talk and participate in our virtual meeting. The meeting will be free of charge and open to members (with early-bird registration) and non-members alike.

This meeting will not only facilitate networking of applied animal welfare scientists around the globe, it will also be the perfect chance to learn more about the latest research happening in each ISAE region, so do join us in this first time ISAE global virtual meeting!

**Submit your abstract here:** <https://tinyurl.com/ISAEvirtual-abstract>

**Register for the meeting sessions here:** <https://tinyurl.com/ISAEvirtual-register>

### Important Dates:

- 22 June: Early bird member registration open / Abstract submission open
- 29 June: Public registration open

- 10 July: Abstract submission close
- 20 July: Speakers notified
- 28 July: Registration close
- 31 July: Deadline for uploading talks
- 6-7 Aug: Meeting time! (12h Thursday + 12h Friday) and Annual General Meeting (AGM)

Please see our [event page](#) for more information and email [isae.virtual@gmail.com](mailto:isae.virtual@gmail.com) for any inquiries about this event!

*Jen-Yun Chou / Assistant Development Officer of the ISAE (2020-2022)*

## 2020 Virtual Annual General Meeting

Due to the pandemic situation and cancellation of this year's Congress, we will go virtual for our Annual General Meeting (AGM). We decided to closely stick to the date pre-reserved for the annual Congress and AGM, but to have two alternative time slots: **Thursday, 6th August, UTC 2pm-3pm** and **Friday, 7th August, UTC 8am-9am**. This is to offer all members a time slot during or close to normal office times (or at least far outside of sleeping times). These times are also arranged around our Global Virtual Meeting.

We will not have any changes to the constitution or any other larger changes. Instead, we will focus on activities and the possibility for questions and discussion. Three Council Officer positions will be vacant and new officers will have to be elected. We will vote on them by use of an online-voting system linked to the AGM. You will receive the necessary details for both the online voting and for joining the virtual AGM via email closer to the scheduled AGM.

*Susanne Waiblinger / President of the ISAE (2019-2021)*

## ISAE Regional News and Development

### Development

In the last newsletter we advertised for a new Assistant Development Officer, and we are delighted to welcome **Jen-Yun Chou** to the role!



“I have recently completed my PhD in Clinical Veterinary Sciences at the University of Edinburgh, Teagasc and SRUC. My PhD project was on using enrichment and feeding strategies to control tail biting in pigs managed on fully slatted floors and also experimenting with different intervention protocols to control tail biting outbreaks. I am now working as a farm animal welfare advisor while continuing my research in pig behaviour and welfare and expanding my research interest in all aspects related to farm animals.”

Jen-Yun has dived into the role and is already making an impact leading different activities, including planning future online events (such as the upcoming ISAE Global Virtual Meeting) and has ideas for continuing to spread ISAE in East Asia. Watch this space!

We are very pleased to have successfully won a large grant from the [Open Philanthropy Project](#) to support ISAE's development activities for two years. This will include repeating our popular [Developing Countries Congress Attendance Fund](#), as well as funding support for [country liaisons](#) and national or regional meetings in areas with less representation where we would like to grow the society and promote applied ethology, including Africa, South Asia, Latin America and East Europe. While most of the national or regional meetings in developing areas this year are postponed due to COVID-19, these funds will carry over to continue to help ISAE grow in the years to come for a more diverse and geographically represented international society.

**Rebecca Sommerville** / *Development Officer of the ISAE (2016-2020)*

## Regional Updates

The [UK and Ireland](#) region has two new regional secretaries: [Keelin O'Driscoll](#) (Ireland) and [Ellen Williams](#) (UK). Keelin and Ellen take over from [Amy Quinn](#) and [Simon Turner](#), and I would like to thank Amy and Simon for all their work coordinating the society's activities across the UK and Ireland for the last five years.

The [USA](#) region needs a new regional secretary now that [Peter Krawczel](#) has moved to Finland. Any member from the USA region interested in the role of regional secretary should contact me ([smrutter@harper-adams.ac.uk](mailto:smrutter@harper-adams.ac.uk)) before the **1st August, 2020**. If we have more than one applicant, we will arrange for a vote.

**Mark Rutter** / *Junior Vice-President of the ISAE (2019-2021)*

**Australasia-Africa.** Earlier this year we were busy making plans for our regional meeting, to be hosted by the University of Melbourne with the theme [Animal behaviour in action: Bridging the divide between knowledge and impact](#). Unfortunately, COVID-19 has thrown a spanner into the works and we had to make the decision to postpone the meeting until November 2021. Early next year we will restart preparations and announce the new date.

In the spirit of socially distanced science, this year we are going to be running a virtual poster-based conference – a “[Summer Showcase](#)” of research from the Australasian-African region. We are currently working on details and will announce developments via our [Facebook](#) ([www.facebook.com/ISAEAA](https://www.facebook.com/ISAEAA)) and [Twitter](#) pages ([https://twitter.com/ISAE\\_AA](https://twitter.com/ISAE_AA)).

On a different note, we have been regional secretaries now for 3 years and we are preparing to pass the baton on at the end of the year. Ideally, the two new secretaries will represent the wide diversity in our region, and current ISAE members from groups under-represented within the society are particularly encouraged to apply. We will make an official call for self-nominations in September however please do get in touch if you would like to discuss these very rewarding roles!

- Keep up-to-date with all of our regional news with our Facebook page: [www.facebook.com/ISAEAA](https://www.facebook.com/ISAEAA)
- And our Twitter feed: [https://twitter.com/ISAE\\_AA](https://twitter.com/ISAE_AA)

**Amanda Doughty and Kris Descovich** / *Regional Secretaries for Australasia-Africa*

## Canada.

### *ISAE – Going virtual 2020!*

- ISAE Virtual Global meeting: August 6 & 7, 2020
- Abstract submission deadline: July 10, 2020
- North American slot: Friday August 7, 20:00 – 22:00 (UTC)
  - Local start times: Pacific: 13:00 / Calgary: 14:00 / Chicago: 15:00 / Eastern: 16:00
- For more information check out the website: [www.applied-ethology.org/Events.html](http://www.applied-ethology.org/Events.html)

### *Looking ahead: The 14th North American Regional Meeting of the ISAE is back on!*

- When: Friday 30 April - Saturday 1 May, 2021
- Where: University of California, Davis Conference Center: 550 Alumni Ln, Davis, CA 95616
- Registration, abstract submission and accommodation: Visit the conference website: <http://animalwelfare.ucdavis.edu/14th-na-isae.html>
- The conference will showcase: Oral and poster presentations, a Friday evening banquet, student award ceremony and reception
- Early-bird registration deadline is February 28, 2021
- Previous registrations for the postponed 2020 meeting will carry over to the new 2021 meeting.
- All currently registered individuals may cancel their registration and request a 100% refund by **August 1, 2020**. Email [events@ucdavis.edu](mailto:events@ucdavis.edu) to request a refund.
- All questions regarding the 2021 NA regional meeting should be directed to Tina Horback at: [kmhorback@ucdavis.edu](mailto:kmhorback@ucdavis.edu)
- The UC Davis team look forward to welcoming attendees to California this coming May!

*A Growing Community.* The Canadian region is growing! We currently sit at 85 members, an increase by 20 members over the past year. Of new members, 60% are students and 40% full members.

*Seeking! New Regional Secretary.* Current regional secretary **Yolande Seddon** will be stepping down after serving 3 years in this position. A search will soon begin for a new secretary – so watch this space.

**Yolande Seddon** / *Regional Secretary for Canada*

**East Asia.** The annual meeting of the Japanese Society for Animal Behaviour and Management was planned to be held in Sapporo, Japan in September 2020, but it has been postponed due to COVID-19.

**Shigeru Ninomiya** / *Regional Secretary for East Asia*

**Nordic.** Since the first half of 2020, the Nordic Region has 81 ISAE members (two more than the year before). The members come from Denmark (21), Finland (10), Sweden (26), and Norway (22) and Estonia (1). There are no members from Iceland or other Baltic countries at the moment.

The Nordic ISAE Winter Meeting was held during 28-30 January, 2020 in Tartu, Estonia, organised by the Estonian University of Life Sciences (**David Richard Arney** and **Maria Soonberg**). Planned plenary talks were held by Dr. Geoff Hosey and Lea Tummeleht (Wild animal behaviour and welfare), Dr. Björn Forkman (Companion animal behaviour and welfare), Prof. Harry Blokhuis

(Farm animal behaviour and welfare), Prof. Adrian Smith (Laboratory animal behaviour and welfare), and Lene Lidfors (Animal welfare in animal assisted interventions), with overall 22 talks and around of 30th participants.

The Nordic Region had a Facebook page where all ISAE members can join but for some reason is shut down at the moment. The page will be open soon, available for all members.

Marko Ocepek, Regional secretary for the Nordic Region is reachable by email ([marko.ocepek@nmbu.no](mailto:marko.ocepek@nmbu.no)) or telephone (+47 67232623).

### Marko Ocepek / *Regional Secretary for Nordic*

**UK and Ireland.** The UK and Ireland region has seen a change this year, with the departure of Simon Turner and Amy Quinn as regional secretaries. They have worked through 7 busy years for ISAE in our region; in 2016 the ISAE congress was held in Edinburgh, and each of the regional meetings were held in a new location (including coming to Ireland for the first time!), so there has been a lot of exposure for the Society. Huge thanks to Amy and Simon for all their hard work in keeping our region so active!

Taking over from Amy and Simon, are Ellen Williams and Keelin O'Driscoll. Ellen is a Lecturer in Animal Science at Nottingham Trent University specialising in zoo animal behaviour and welfare studies. Her research focuses on increasing our understanding of the zoo environment on animal behaviour and welfare and the development of evidence-based practice in zoo animal management. This is Keelin's second time getting involved in the running of ISAE, having been on council from 2008-2014. She works as a researcher in Teagasc, the Irish Agriculture and Food Development Authority, specialising in pig welfare and management. We are both looking forward to continuing the good work of Amy and Simon - Ellen has dived in, and already volunteered to help co-ordinate the ISAE Global Virtual meeting in August!



In February this year our regional meeting was held in Nottingham, and attracted 54 delegates from across the geographical spread of the region. Most of the 23 speakers were in the early stages of their research career, and as such were eligible to take part in a competition for the best student presentation, donated by the Jeanne Marchig International Centre for Animal Welfare Education, at the University of Edinburgh. This year, the award was given in memory of Dr. Fiona Rioja Lang, who was working for the centre at the time of her death last year, and presented by her parents. Fiona's Dad gave

a beautiful speech, describing Fiona's love of animals and research, and told the story of how she developed her career in applied ethology, travelling around the world as she did so. The winner of the award was Laura Shrewbridge-Carter, (pictured above) who presented a fascinating talk, asking the question 'Where do cows lie? Getting to the truth'. Second place went to Andrew Crump

from Queens University Belfast, who presented data showing that 'Pasture access affects behavioural indicators of dairy cow welfare' – so 'team dairy' did very well this time around 😊 Well done to Laura and Andrew!.

**Keelin O'Driscoll and Ellen Williams** / *Regional Secretaries for UK and Ireland*

**West-Central Europe.** Meeting announcement: 52nd International Congress on Applied Ethology of the German Veterinary Society 26–28 November, 2020 in Freiburg, Germany.

If the congress cannot take place as planned due to the COVID-19 situation, the organizers will offer a 1-2 day online meeting. Information about the type of congress (in Freiburg or online) will be provided in due time.

During the congress, the ISAE West Central Europe Region and German Veterinary Society (DVG) have included a time slot during which PhD students are offered the opportunity to give short presentations of their projects, introducing the topic and methodology. This format informs scientists of planned and ongoing research projects in their fields and allows students to present and discuss their projects early on. Interested students can still apply for this year's short presentations. For more information, please contact Antonia Patt ([antonia.patt@fli.de](mailto:antonia.patt@fli.de))

Further, we will have the annual general meeting of the West Central Europe Region during this conference.

**Antonia Patt** / *Regional Secretary for West-Central Europe*

## Other News

### ISAE Takes a Stand Against Racism and Supports Diversity and Inclusiveness

The ISAE condemns systemic and institutionalized forms of racism and acknowledges that these systems even pervade academia and the sciences. In this way, they affect a number of our beloved ISAE colleagues and friends. Please know that the ISAE community has been there to support these colleagues and will continue to do so in the future.

*"As a scientific society, the ISAE recognizes the importance of supporting and promoting diversity in its membership and the wider community, in gender, age, race and ethnicity, geographical representation and other factors."* This **diversity statement** has been part of the [ISAE Procedural Guidelines](#) for several years and we aim to apply this statement in nomination and selection of officers, representatives, speakers and recipients of funds, awards and honours.



Through the ISAE's development activities, we aim to include new countries and new members into the ISAE network and make them feel welcome and appreciated. ISAE meetings are very friendly and engagement with new members of the society is actively encouraged.

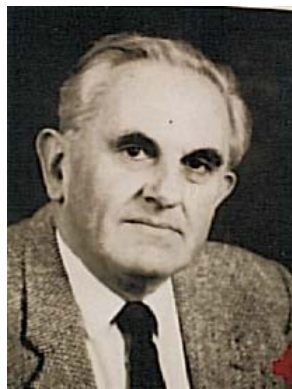
Having said that, diversity is still relatively limited in our society and in the field of animal sciences in general, for instance in terms of BAME (Black, Asian, minority ethnic) membership in Western countries. ISAE Council would welcome ideas on how to promote diversity and support inclusiveness in our society.

To give this important topic the attention it deserves, ISAE will form an independent committee which will discuss these issues and which will actively seek input from people from different ethnicity and geographical backgrounds. We aim to find new ways to make all people feel equally welcome and appreciated in our society and to take away any hurdles that obstruct this process. We welcome your thoughts, comments, and suggestions as we take this journey together.

*ISAE Council 2020*

## Remembering Roger Ewbank

**Roger Ewbank, OBE MVSc MRCVS (1931 – 2019).** We are sorry to hear of the death of Roger Ewbank in November 2019. Roger was Founder Vice-President and twice President of the Society for Veterinary Ethology, and an Honorary Fellow of ISAE.



Roger Ewbank qualified as a veterinary surgeon in 1957. He did three years in veterinary practice, then nearly twenty years as Lecturer (later Senior Lecturer) in Animal Husbandry at the University of Liverpool. He was appointed as Director of the Universities Federation for Animal Welfare (UFAW) in 1979 and remained in that post until retirement in 1996. He remained active in our Society throughout, and was supportive of our change of name, welcoming the contribution of non-veterinarians to applied ethology and the society, while believing strongly in the continued involvement of vets. He also served as a zoo inspector, on the UK's Farm Animal Welfare Council (for 17 years), on the Animal Procedures Committee and on the Companion Animal Behaviour Therapy Studies Group.

Roger published research on topics including nursing behaviour in sheep, social behaviour of pigs and dog-sitting in cattle and sheep, but his contributions to the literature on applied behaviour and welfare were not limited to his own research. He contributed to many publications on farm animal welfare and edited two editions of UFAW's Farm Animal Handbook. Perhaps most far-sighted and far-reaching was his foundation in 1992 of UFAW's journal *Animal Welfare*, which he also edited. He was still active in recent years, co-authoring with Danny Mills a chapter on **ISAE, ethology and the veterinary profession** in the 2016 anniversary volume *Animals and Us: 50 years and More of Applied Ethology* (eds Brown et al).

Roger Ewbank was a wonderfully warm and enthusiastic character, and a staunch and dedicated advocate of animal ethology and welfare. He will be missed

**Mike Appleby** / *Former Procedural Advisor of the ISAE*

## Survey Request

Dear fellow animal behaviour & welfare researchers,

Most of us have faced in the last few months a complete change in our working lives. For some, this may have been a positive experience whereas for others, it may have been extremely challenging. This may have short- and long-term knock-on effects on our research and well-being.

To assess the impact of the pandemic on our field of research, as well as the challenges faced by you all, we would like to ask for your **participation in our survey**.

Its aim is to assess how animal behaviour and welfare researchers have been affected in the last months and whether there are specific situations that require attention.

This survey is meant for all animal behaviour and welfare researchers and PhD students. We particularly encourage researchers with young children to fill out the questions. Giving around 15 minutes of your time will not only help to create research insight, but also will help you to reflect for yourself on the past few months.

The results will soon after be submitted to the ISAE Special Issue 'COVID-19; Rethinking the environment' in *Applied Animal Behaviour Science*.

Please click on the link to complete the survey:

<https://www.research.net/r/researcher-in-lockdown>

Thank you in advance for your help. Please share the link with your colleagues.

*Belinda Vigors & Irene Camerlink*

## EU Platform on Animal Welfare

The seventh meeting of the EU Platform on Animal Welfare took place virtually on 15th June, 2020. It was the first meeting of the Platform under the new Commission and the plans for the next years regarding animal welfare within the **Farm to Fork Strategy for a fair, healthy and environmentally-friendly food system** were presented. One main objective in the next 5 years is to evaluate and revise the animal welfare legislation to align it with the sustainability goals, with latest scientific evidence, broaden its scope, make it easier to enforce and ultimately ensure a higher level of animal welfare. A two-step process is planned, first the evaluation, i.e. the "fitness check," until around the end of 2021, then an impact assessment and legal drafting that should lead to adopted legislative proposals by the end of 2023. The process will include public feedback and consultations – see link below for a first feedback possibility– and several EFSA mandates to update scientific opinions on transport, pigs, broilers, laying hens and calves. The second main objective is to establish animal welfare labelling as part of a sustainable food labelling framework until 2024, to enable consumers to make sustainable food choices. A new platform subgroup on animal welfare labelling will be created and an external study will explore the different options

for animal welfare labelling. Additionally, projects on best practice development for laying hens in alternative systems and for dairy cows are planned. The new Commissioner, Stella Kiriakides, and her team of DG SANTE emphasised close collaboration with DG AGRI to integrate the F2F strategy with animal welfare objectives into the common agricultural policy.

It is a timely, very welcome work plan that yields hope to real changes, not only regarding animal welfare, but for sustainability in all its aspects; potentially affecting international and trade policies on animal welfare. But it also comes with some negative side effects: frustration among members of the subgroups on pigs and transport. These two subgroups were closed, due to the reorganisation with new priorities and limited resources. According to the presentation, the open issues of these two subgroups are partly considered in other activities (EFSA opinion on animal transport, study on alternatives to transport of unweaned calves over long journeys, third reference centre on ruminants and equines) or will be reconsidered after reorganisation (measuring tail damage of pigs in slaughterhouses), but see also below in the subgroup report. As readers of the past newsletters know, since 2017 the EU Platform on Animal Welfare had established in total seven working groups on specific animal welfare topics, with ISAE representatives in most of them. Two of the subgroups were officially established by the Commission, on welfare of pigs (ISAE representative: [Emma Baxter](#)) and on animal transport ([Mette Herskin](#)) – the ones closed now. Five were initiated by platform members: equines ([Janne Winther Christensen](#)), fish ([Moira Harris](#)), dog trade (no ISAE representative), pullets ([Bas Rodenburg](#)), and piglet castration ([Heleen van de Weerd](#)). The first three (equines, fish, dog trade) had finalized material since the last meeting; the results were presented and adopted by the platform – see below for more details. The other two subgroups were not active since the last Platform meeting. Further presentations during the platform meeting were on the (planned) activities of the two already established European reference centres for animal welfare (small farmed animals, pigs), the third Action plan of the OIE Platform on Animal Welfare for Europe, mid-term findings of evaluation of the EU strategy for animal welfare and a presentation on illegal trade of pet animals by the Croatian presidency.

Please have a look at the documents created by subgroups and adopted by platform members, the presentations and recording of the meetings via the links below. And don't forget to have a say regarding the [fitness check roadmap](#)!

- The conclusions and documents of the subgroups adopted so far: [https://ec.europa.eu/food/animals/welfare/eu-platform-animal-welfare/platform\\_conclusions\\_en](https://ec.europa.eu/food/animals/welfare/eu-platform-animal-welfare/platform_conclusions_en)
- Presentations and recording of this and previous meetings: [https://ec.europa.eu/food/animals/welfare/eu-platform-animal-welfare/meetings\\_en](https://ec.europa.eu/food/animals/welfare/eu-platform-animal-welfare/meetings_en)
- Public feedback for the roadmap of the fitness check (open until **29th July**): <https://ec.europa.eu/info/law/better-regulation/have-your-say/initiatives/12400-Fitness-Check-of-the-EU-legislation-on-animal-welfare>

*Susanne Waiblinger / President of the ISAE (2019-2021)*

## Reports from the Species Subgroups.

*1.1 Pigs – Emma Baxter.* The pig subgroup is now closed and outcomes from our work were presented at the seventh meeting of the Platform on June 15th, 2020. No consensus was reached on measuring tail biting damage at slaughterhouses. However, the EU Reference Centre on

animal welfare for pigs ([www.eurcaw.eu/en/eurcaw-pigs.htm](http://www.eurcaw.eu/en/eurcaw-pigs.htm)) is working to develop indicator protocols (including icebergs) and guidelines to reduce the need for tail docking. To achieve that, they have agreed on a work programme with the Commission that includes activities up to 31 December 2020. Some of the points mentioned by the sub-working group on pigs are included in this programme.

*1.2 Transport – Mette S. Herskin.* The unweaned-calf group is currently in contact with DG SANCO in order to be able to share the outcome of their work.

*1.3 Horse / Equids – Janne Winther Christensen.* The Platform members acknowledged on 17th of June the donkey guide by adopting the following conclusion:

The Platform acknowledges the work of the voluntary initiative members and concludes that the following document should be promoted by all Platform members in order to improve the welfare of donkeys and donkey hybrids in the EU:

Doc/11066/2020 Guide to good animal welfare practice for the keeping, care, training and use of donkeys and donkey hybrids

Factsheets are still being circulated to the group for comments.

*1.4 Fish Welfare – Moira Harris.* The voluntary subgroup on fish welfare has recently completely its General Guidelines on Water Quality and Handling. These have been submitted to and accepted by the EU Platform plenary, following a 2-year process of development. At its first meeting, the subgroup identified that it would address the areas of water quality and fish handling because these apply to all fish and at all stages of their production. We also decided that (because farmed fish species are so diverse in their characteristics and needs) it would be helpful also to provide guidelines for some individual species: for these, we chose rainbow trout, common carp, sea bass and sea bream.

Unfortunately, at our final meeting, the subgroup was unable to agree to the content of the species-specific parts of our document (primarily due to objections by the producer group, FEAP). In addition to the main Guidelines document we had spent some time collating behavioural indicators of welfare (both in general and for the four target species) but this section was thought to require further work. Therefore, the document put forward to the EU platform doesn't represent the substantial effort which went into researching and writing it.

*1.5 Welfare of Pullets – Bas Rodenburg.* There have not been recent physical or electronic meetings. This is delaying the final work on the guidelines for pullet management. Due to stakeholders' disagreement on some issues, progress is slow. Probably the guidelines will be presented at the next platform meeting.

*1.6 Pig Castration – Heleen van de Weerd.* There have not been any further meetings of the pig castration voluntary subgroup, since the previous ISAE newsletter.

## **Collaboration with OIE**

In 2017, the ISAE and the World Organisation for Animal Health (OIE) agreed on a closer collaboration in the area of animal welfare (for OIE Animal Welfare activities see <https://www.oie.int/en/animal-welfare/>). As part of the collaboration, ISAE representatives participated at the Animal Welfare Global Forums held in Paris in 2018 and 2019, ISAE proposed

experts for OIE working groups or meetings and OIE national contact points were invited to the ISAE annual congresses and accompanying workshops in Denmark 2017 and Norway 2019 with support of the DCCAF (see Development). Further, the OIE is a corporate member of the ISAE.

Many members of ISAE have been or are already active for OIE in different roles. Now there is a new possibility to get involved and contribute to standard setting within OIE with your animal welfare expertise: there is a **call for experts** to become a member of the OIE specialist commissions. You can find all information at:

<https://www.oie.int/en/standard-setting/overview/call-for-experts-to-join-the-oies-specialist-commissions/>

*Susanne Waiblinger / President of the ISAE (2019-2021)*

## New Books

**CABI books on animal welfare and behavior 20% off.** CABI has generously agreed to offer ISAE members 20% off books on animal welfare and behavior. CABI has a long history of publishing in animal welfare. Our books cover the cutting edge of research as well as provide key textbooks for students and applied reference titles for practicing vets. A new book, *The Slaughter of Farmed Animals*, by Temple Gradin and Michael Cockram, was published last month. For 20% off, use the code "CCISAE", valid through **December 31, 2020**.

*Stress and Animal Welfare: Key Issues in the Biology of Humans and Other Animals.* This book, published mid-December 2019, is useful for medical, veterinary, biology and animal science students and others interested:

Broom, D.M. and Johnson, K.G. 2019. *Stress and Animal Welfare: Key Issues in the Biology of Humans and Other Animals*, 2nd edn. (pp. 230). Cham, Switzerland: Springer Nature. ISBN 978-3-030-32152-9. ISBN 978-3-030-32153-6 (eBook). <https://doi.org/10.1007/978-3-030-32153-6>

The self-contained chapters with reference lists are:

- One welfare, one health, one stress, humans and other animals
- Adaptation, regulation, sentience and brain control
- Limits to adaptation
- Stress and welfare: history and usage of concepts
- Assessing welfare: short-term responses
- Assessing welfare: long-term responses,
- Preference studies and welfare
- Ethics: considering world issues
- Stress and welfare in the world

The Springer Review Service can provide free electronic review copies for interested academics or journalists; the team is reachable via: <https://www.springer.com/gp/reviewers> and [bookreview@springernature.com](mailto:bookreview@springernature.com).

If their institution has licensed Springer eBook collection(s), all interested readers can use the MyCopy service. To check this possibility, library end users must access the book at SpringerLink (<https://link.springer.com/>), using their institution's/library's network. A MyCopy is ideal for those who prefer to work with a printed version. Starting from the SpringerLink book page, they can directly order their own personal, printed-on-demand softcover edition of the eBook for £24.99 / \$24.99 / € 24.99.

## Contact Information

### Council Members

<b>President</b>	Susanne Waiblinger	<a href="mailto:susanne.waiblinger@vetmeduni.ac.at">susanne.waiblinger@vetmeduni.ac.at</a>
<b>Senior Vice-President</b>	Bas Rodenburg	Professor in Animal Welfare Department of Animals in Science and Society (DASS) Faculty of Veterinary Medicine Utrecht University P.O. Box 80 166, 3508 TD Utrecht, The Netherlands Tel +31 30 253 29 67 <a href="mailto:t.b.rodenburg@uu.nl">t.b.rodenburg@uu.nl</a>
<b>Junior Vice-President</b>	Mark Rutter	<a href="mailto:smrutter@harper-adams.ac.uk">smrutter@harper-adams.ac.uk</a>
<b>Secretary</b>	Marisa Erasmus	Department of Animal Sciences Purdue University 270 S. Russell St. West Lafayette, IN 47907 USA Tel +1 765 496 3886 <a href="mailto:merasmus@purdue.edu">merasmus@purdue.edu</a>
<b>Assistant Secretary</b>	Giuliana Miguel	<a href="mailto:Giuliana.miguelp@gmail.com">Giuliana.miguelp@gmail.com</a>
<b>Membership Secretary</b>	Gemma Charlton* (* <i>interim</i> : Christian Nawroth)	<a href="mailto:isaembership@hotmail.co.uk">isaembership@hotmail.co.uk</a>
<b>Development Officer</b>	Rebecca Sommerville	<a href="mailto:isaedevelopment@outlook.com">isaedevelopment@outlook.com</a>
<b>Assistant Development Officer</b>	Jen-Yun Chou	<a href="mailto:jenyun.chou@gmail.com">jenyun.chou@gmail.com</a>
<b>Treasurer</b>	Emma Baxter	<a href="mailto:ISAE_treasurer@outlook.com">ISAE_treasurer@outlook.com</a>
<b>Communications Officer</b>	Jennifer Van Os	Assistant Professor & Extension Specialist in Animal Welfare Department of Dairy Science University of Wisconsin-Madison <a href="mailto:info@applied-ethology.org">info@applied-ethology.org</a>
<b>Assistant Communications Officer</b>	Christy Goldhawk	<a href="mailto:cgoldhaw@gmail.com">cgoldhaw@gmail.com</a>

<b>Senior Editor</b>	Irene Camerlink	<a href="mailto:irene.camerlink@sruc.ac.uk">irene.camerlink@sruc.ac.uk</a>
<b>Junior Editor</b>	Dana Campbell	<a href="mailto:dana.campbell@csiro.au">dana.campbell@csiro.au</a>
<b>Procedural Advisor</b>	Heleen van de Weerd	<a href="mailto:heleen@cerebrus.org">heleen@cerebrus.org</a>
<b>Ethics Committee Chair</b>	Alexandra Whittaker	<a href="mailto:alexandra.whittaker@adelaide.edu.au">alexandra.whittaker@adelaide.edu.au</a>
<b>Legal Advisor</b>	Bill Jackson	<a href="mailto:drwilliamjackson@hotmail.co.uk">drwilliamjackson@hotmail.co.uk</a>
<b>Honorary Independent Examiner</b>	Daniel Bedford	

## Regional Secretaries and Student Representatives

<b>Australasia-Africa</b>	Kris Descovich	Environmental and Animal Sciences Unitec Institute of Technology Auckland, New Zealand Tel +64 272 888 008 <a href="mailto:kdescovich@unitec.ac.nz">kdescovich@unitec.ac.nz</a>
	Amanda Doughty	<a href="mailto:amandakdoughty@gmail.com">amandakdoughty@gmail.com</a>
<b>Benelux</b>	Lisanne Stadig	<a href="mailto:Lisanne.stadig@ilvo.vlaanderen.be">Lisanne.stadig@ilvo.vlaanderen.be</a>
	Laura Webb	<a href="mailto:Laura.webb@wur.nl">Laura.webb@wur.nl</a>
<b>Canada</b>	Yolande Seddon	Swine Behaviour & Welfare Large Animal Clinical Sciences Western College of Veterinary Medicine 52 Campus Dr. Rm 2505 Saskatoon SK, S7N 5B4 Tel +1 306 966 7151 <a href="mailto:yolande.seddon@usask.ca">yolande.seddon@usask.ca</a>
<b>East Asia</b>	Shigeru Ninomiya	Laboratory of Animal Welfare and Behaviour, Animal Science, Department of Agricultural Science, Faculty of Applied Biological Sciences Gifu University 1-1 Yanagido Gifu City 501-1193, Japan <a href="mailto:nino38@gifu-u.ac.jp">nino38@gifu-u.ac.jp</a>



<b>East Central Europe</b>	<b>Radka Šárová</b>	Institute of Animal Science Partelstr, P15, Prague 5 Prague 10, CZ 10400, Czech Republic Tel +42 267 009765 <a href="mailto:sarova.radka@gmail.com">sarova.radka@gmail.com</a>
<b>Latin America</b>	<b>Maria Jose Hötzel</b>	<a href="mailto:isae.latinoamerica@gmail.com">isae.latinoamerica@gmail.com</a>
	<b>Ariel Tarazona</b>	
<b>Mediterranean</b>	<b>Emma Fàbrega</b>	IRTA-C, Centre Avaluació del Porcí Tel 972630236 ext. 1437 Fax 972630533 <a href="mailto:emma.fabrega@irta.cat">emma.fabrega@irta.cat</a>
	<b>Daniela Alberghina</b>	<a href="mailto:dalberghina@unime.it">dalberghina@unime.it</a>
<b>Nordic</b>	<b>Marko Ocepek</b>	Norwegian University of Life Sciences <a href="mailto:marko.ocepek@nmbu.no">marko.ocepek@nmbu.no</a>
<b>UK &amp; Ireland</b>	<b>Keelin O'Driscoll</b>	<a href="mailto:keelin.odriscoll@teagasc.ie">keelin.odriscoll@teagasc.ie</a>
	<b>Ellen Williams</b>	<a href="mailto:ellen.williams@ntu.ac.uk">ellen.williams@ntu.ac.uk</a>
<b>USA</b>	<b>Peter Krawczel</b>	<a href="mailto:pkrawcze@utk.edu">pkrawcze@utk.edu</a>
<b>West Central Europe</b>	<b>Antonia Patt</b>	Institute of Animal Welfare and Animal Husbandry Friedrich-Loeffler-Institut, Federal Research Institute for Animal Health Dörnbergstr. 25/27 29223 Celle, Germany <a href="mailto:antonia.patt@fli.de">antonia.patt@fli.de</a>
<b>Student Representatives</b>	<b>Laura Whalin</b>	<a href="mailto:laura.whalin@alumni.ubc.ca">laura.whalin@alumni.ubc.ca</a>
	<b>Rachel Park</b>	<a href="mailto:rmpark@ncsu.edu">rmpark@ncsu.edu</a>